



Spokane International Airport

GEG – GENERATING ECONOMIC GROWTH

AVAILABLE SPACE FOR LEASE

Building 1378, Suite 116 • 3707 S. Godfrey Boulevard • Spokane, WA 99224

SPOKANE INTERNATIONAL AIRPORT BUSINESS PARK

Strategically Located

The Airport Business Park is a commercial real estate complex located northwest of Geiger Boulevard at the Geiger Interchange on Interstate 90. The location offers many conveniences including easy access to air cargo facilities, commercial flights, private charters, corporate hangars and the regional distribution center for the U.S. Post Office. In addition to the Interstate, the State Highway is in close proximity (less than 2 miles) from the Business Park entrance allowing quick and easy access to the region's transportation system.

One of nine commercial property locations, the Business Park offers office and warehouse space as well as land for build-to-suit.

Flex Space Available

Building 1378, Suite 116 Space 685 sq. ft.

Month-to-month lease rate

\$11,180.04* yearly - \$16.3212* per sf/yr

1+ yearly lease rate

\$9,754.68* yearly - \$14.2404* per sf/yr

*Utilities, refuse, janitorial, interior/exterior maintenance and snow removal included in lease

Building Features

- Executive conference room
- Newly remodeled ADA restrooms
- Employee and customer vehicle parking
- Floor plan and suite dimensions on reverse side

Contact:

Leisa Kosanke

Marketing Manager

Spokane International Airport

9000 W. Airport Drive, Suite 204

Spokane, WA 99224

509.455.6412

509.481.3340 - cell

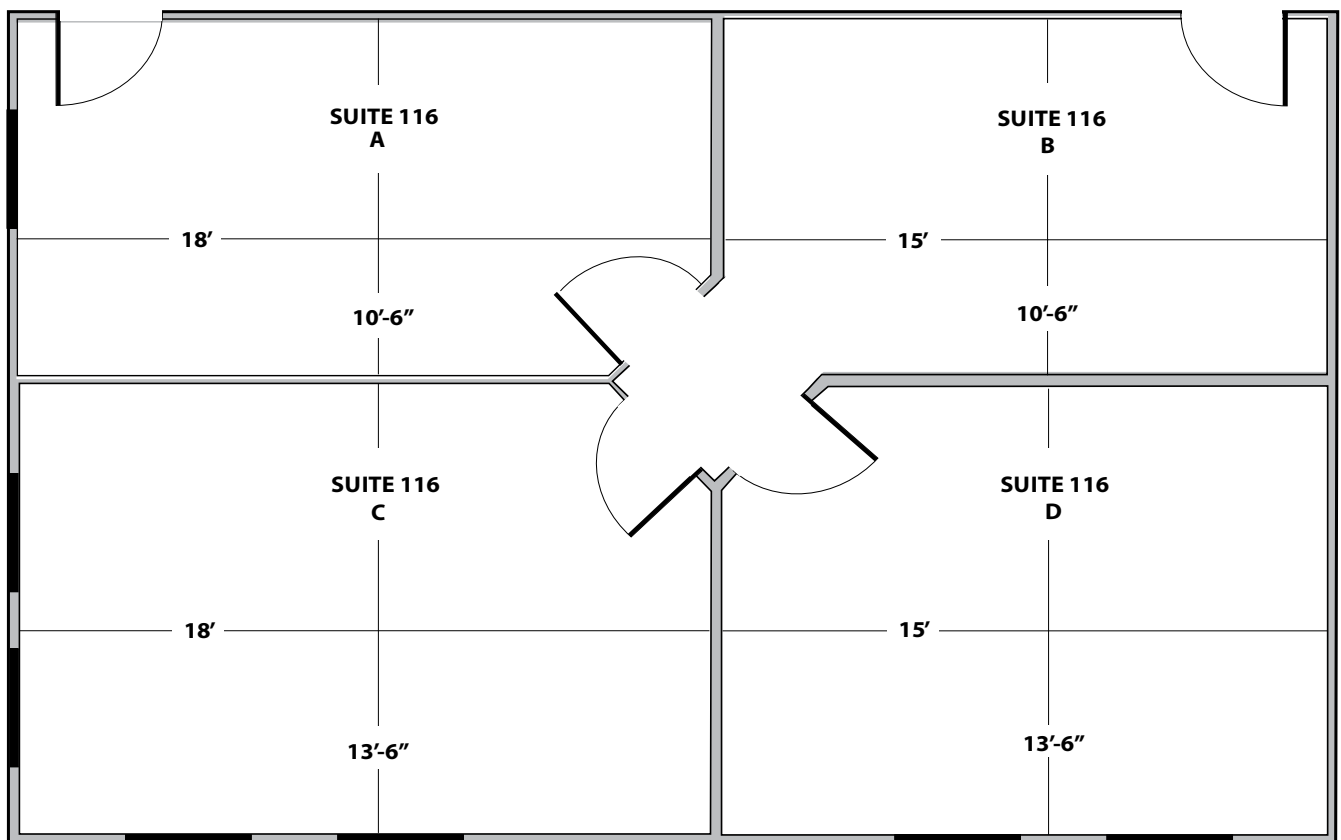
lkosanke@spokaneairports.net

Website: www.spokaneairports.net



AVAILABLE SPACE FOR LEASE

Building 1378, Suite 116
3707 S. Godfrey Boulevard
Spokane, WA 99224



• Floor plan not to scale

Contact:

Leisa Kosanke
Marketing Manager
Spokane International Airport
9000 W. Airport Drive, Suite 204
Spokane, WA 99224
509.455.6412
509.481.3340 - cell
lkosanke@spokaneairports.net
Website: www.spokaneairports.net