



Spokane International Airport

GEG – GENERATING ECONOMIC GROWTH

# AVAILABLE SPACE FOR LEASE

**Electric Building • 9108 W. Electric Avenue • Spokane, WA 99224**

## SPOKANE INTERNATIONAL AIRPORT

### Strategically Located

The Airport's commercial real estate complex is divided into nine locations across more than 5,000 acres serving both aviation and non-aviation related businesses. The Electric Building is located off Geiger Boulevard only minutes from the Interstate 90, Geiger Interchange. The Airport location offers many conveniences including easy access to air cargo facilities, commercial flights, private charters, corporate hangars and the regional distribution center for the U.S. Post Office. In addition to the Interstate, the State Highway is in close proximity from the Business Park entrance allowing quick and easy access to the region's transportation system.

In addition to this property, the Business Park offers office and warehouse space as well as land for build-to-suit.

### Office Space Available

Electric Building

Single Tenant Professional Building

Office Space 2,308 sq. ft.

1+ yearly lease \$28,526.88 - \$12.3600 per sf/yr

### Building Features

- Complete renovation 1998
- HVAC system includes electric heat pump for heating and A/C and forced-air furnace for supplemental heat
- Two 400 amp panels
- Restrooms; first floor and second floor with shower
- Water provided by well
- Floor plan and suite dimensions on reverse side

### Contact:

Leisa Kosanke

Marketing Manager

Spokane International Airport

9000 W. Airport Drive, Suite 204

Spokane, WA 99224

**509.455.6412**

**509.481.3340 - cell**

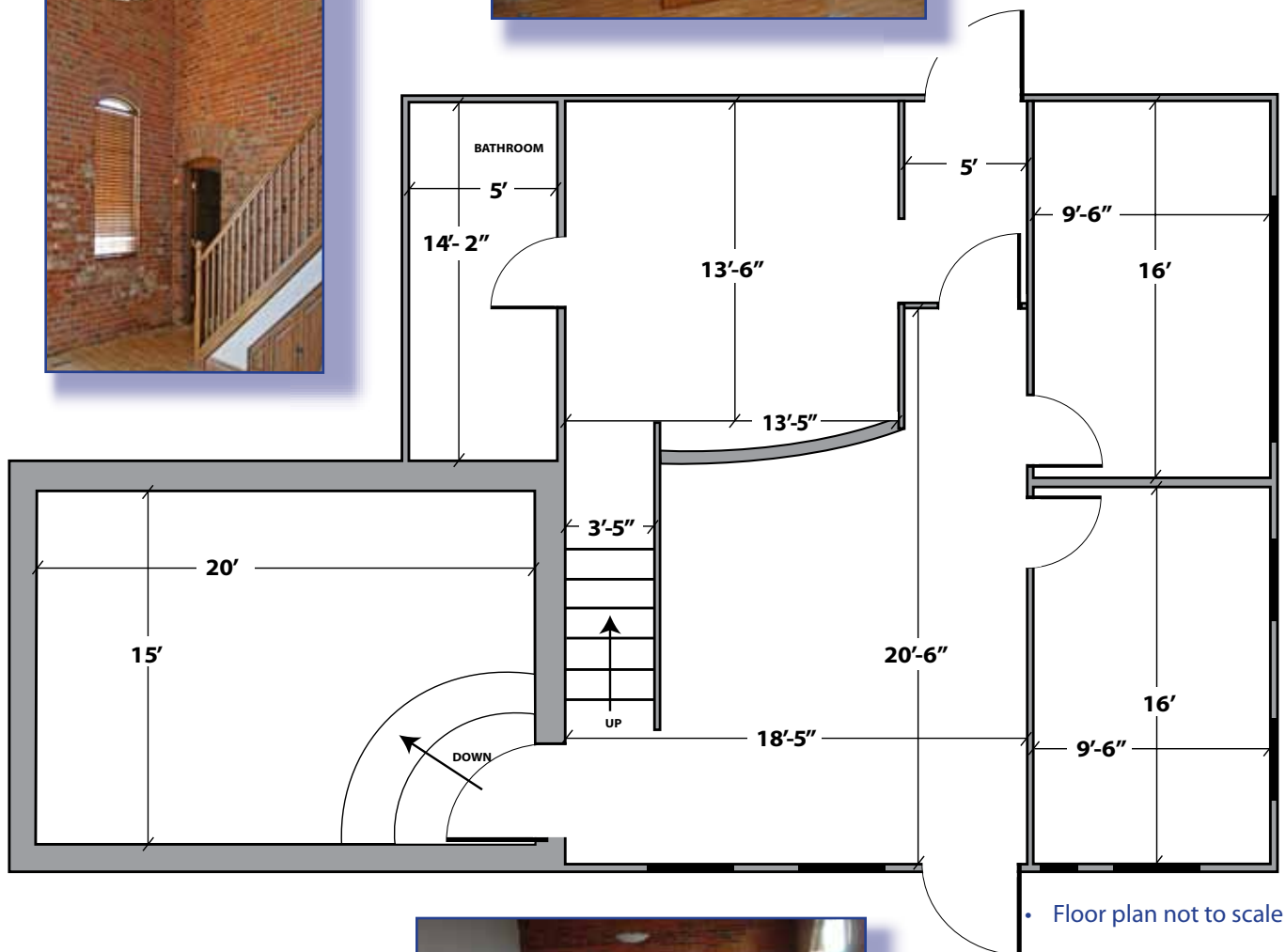
lkosanke@spokaneairports.net

Website: [www.spokaneairports.net](http://www.spokaneairports.net)



# AVAILABLE SPACE FOR LEASE

**Electric Building**  
**First Floor**  
**9108 W. Electric Avenue**  
**Spokane, WA 99224**



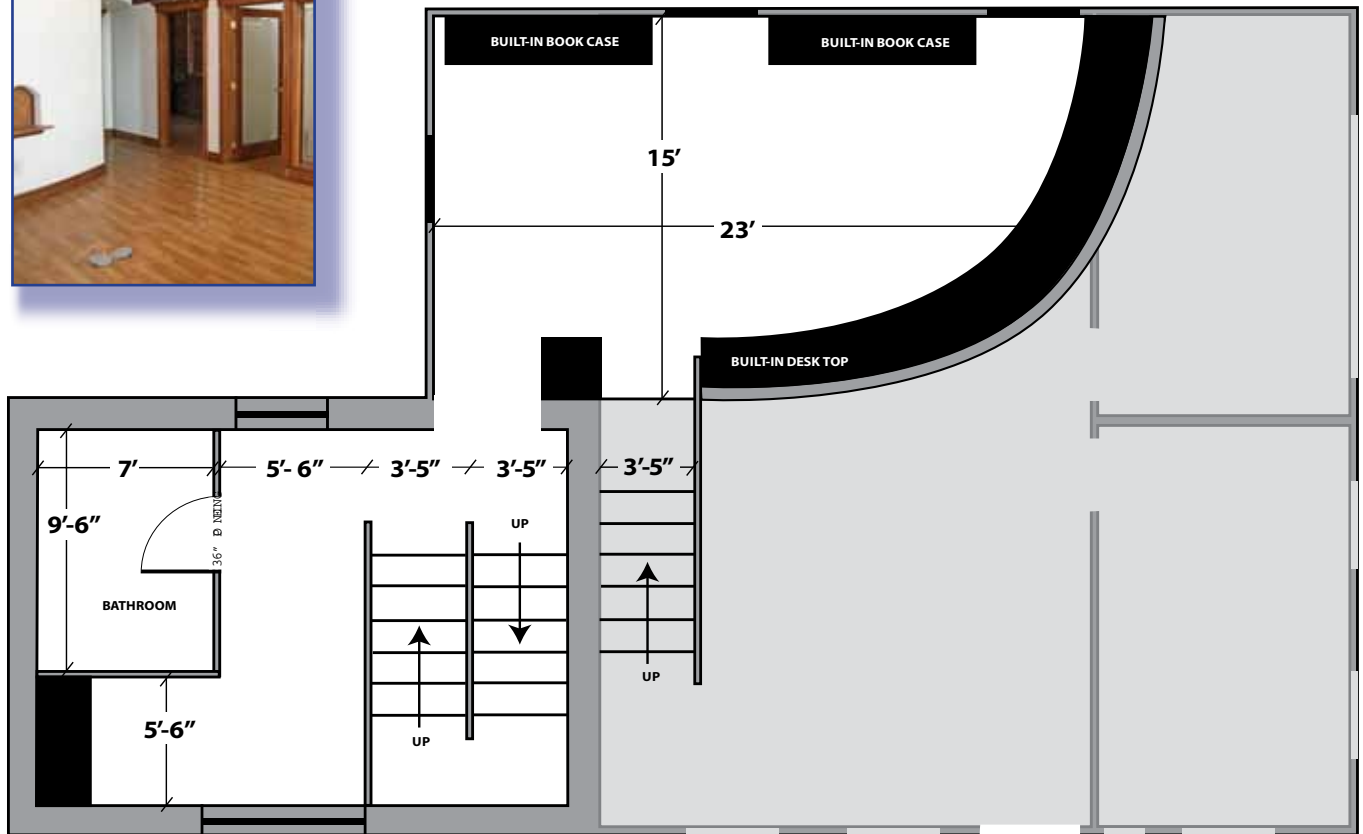
**Contact:**

Leisa Kosanke  
Marketing Manager  
Spokane International Airport  
9000 W. Airport Drive, Suite 204  
Spokane, WA 99224  
**509.455.6412**  
**509.481.3340 - cell**  
lkosanke@spokaneairports.net  
Website: www.spokaneairports.net



# AVAILABLE SPACE FOR LEASE

**Electric Building  
Second Floor  
9108 W. Electric Avenue  
Spokane, WA 99224**



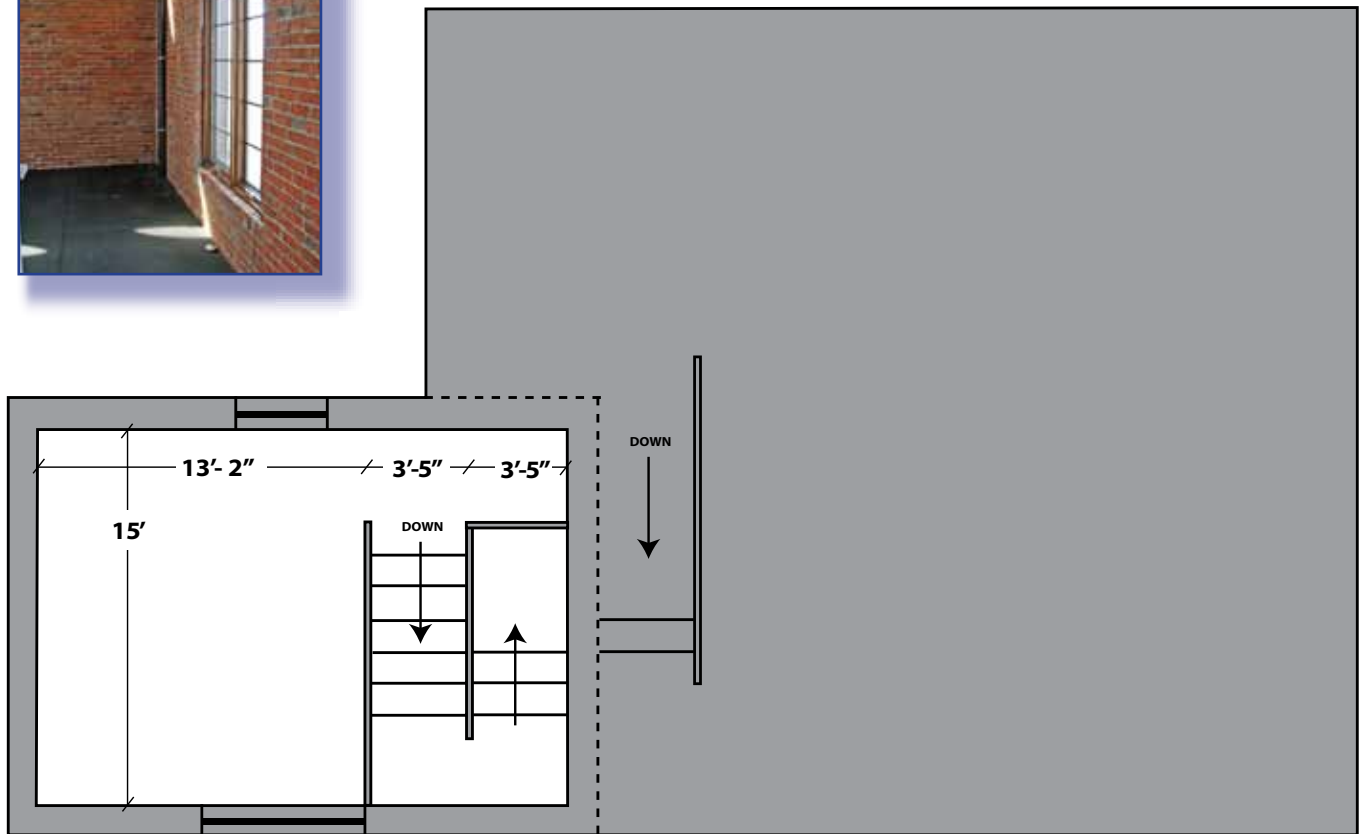
• Floor plan not to scale

**Contact:**

Leisa Kosanke  
Marketing Manager  
Spokane International Airport  
9000 W. Airport Drive, Suite 204  
Spokane, WA 99224  
**509.455.6412**  
**509.481.3340 - cell**  
lkosanke@spokaneairports.net  
Website: [www.spokaneairports.net](http://www.spokaneairports.net)

# AVAILABLE SPACE FOR LEASE

**Electric Building  
Third Floor  
9108 W. Electric Avenue  
Spokane, WA 99224**



• Floor plan not to scale

**Contact:**

Leisa Kosanke  
Marketing Manager  
Spokane International Airport  
9000 W. Airport Drive, Suite 204  
Spokane, WA 99224  
**509.455.6412**  
**509.481.3340 - cell**  
lkosanke@spokaneairports.net  
Website: [www.spokaneairports.net](http://www.spokaneairports.net)