

FIGURE 8
 GSI Water Solutions, Inc. et al 2015 – Inferred Groundwater Subsystems within the West Plains.

August 2024



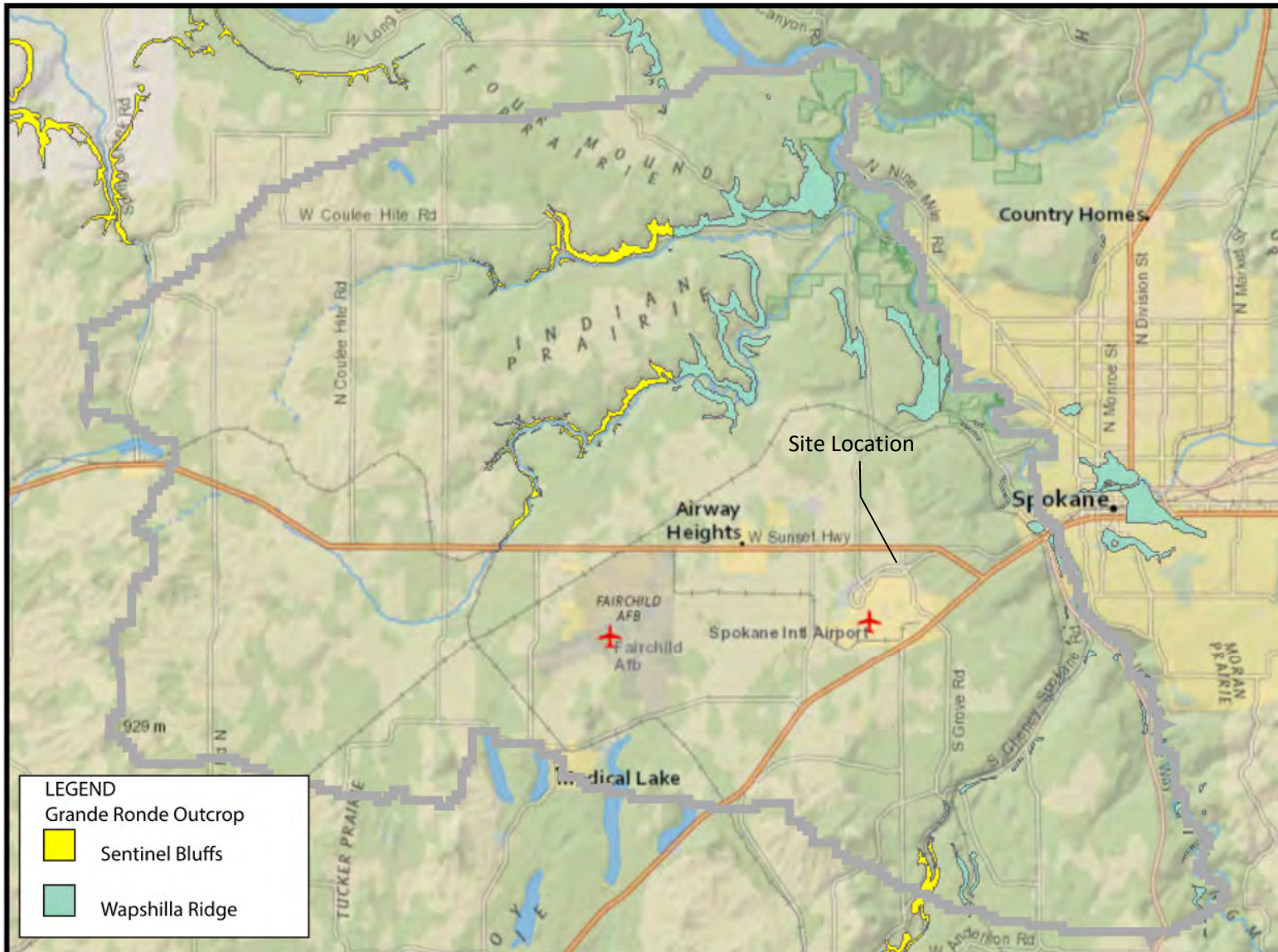
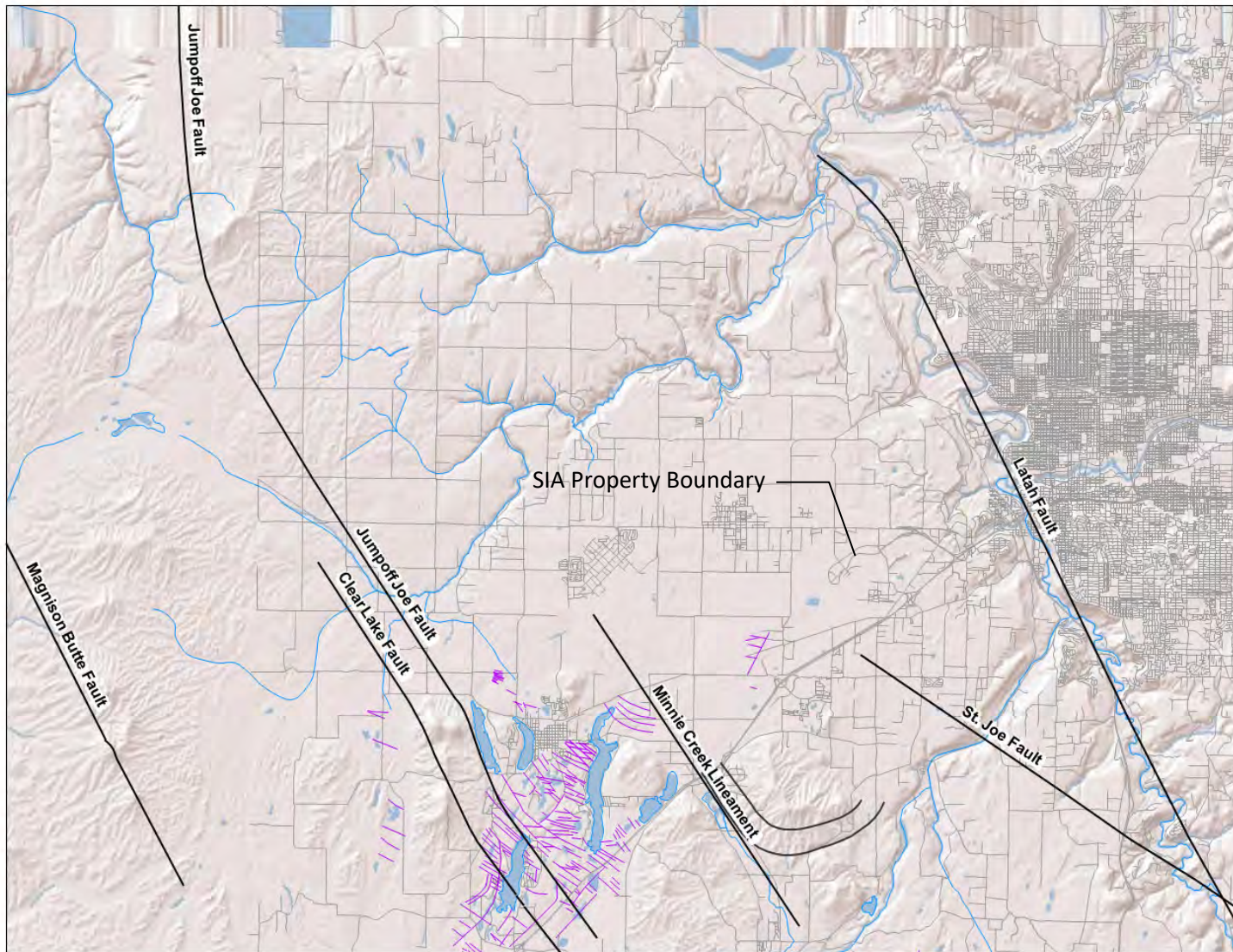


FIGURE 9
 GSI Water Solutions, Inc., et. al. 2015 –Map showing Grande Ronde outcrop in Project Area
 August 2024



West Plains Geologic Structures

This map depicts geologic structures that may affect groundwater flow patterns in the West Plains area of Spokane County.

This project is part of WRIA 54 Phase IV Watershed Plan Implementation funded by Washington Department of Ecology Grant G1000326

Legend

- Faults
- Fractures

1 0.5 0 1 2 Miles

FIGURE 10
McCollum and Pritchard 2012- Geologic structures of the West Plains

August 2024

APPENDIX A
Washington State Department of Natural Resources
Geologic Map of the Airway Heights 7.5-Minute
Quadrangle, Spokane County, Washington