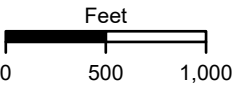


**LEGEND**

- Primary Airport Area
- AOA Fenceline
- Remtech Soil Remediation
- ANG Swamp Dump
- Geiger Field Landfill
- Park Drive Waste Disposal / Shamrock Paving

**Notes**

- 1.) AOA - Air Operations Area
- 2.) ANG - Air National Guard
- 3.) Areas identified are not exhaustive, additional sites may be discovered during further investigation.
- 4.) Outlined areas are approximate and generated from historical Installation Restoration Program reports and have been further refined by comparing historical aerial imagery.
- 5.) Aerial imagery provided by Esri ArcGIS Online, 2023.



Projected Coordinate System  
Datum: NAD 83  
State Plane Washington North  
Units: Feet



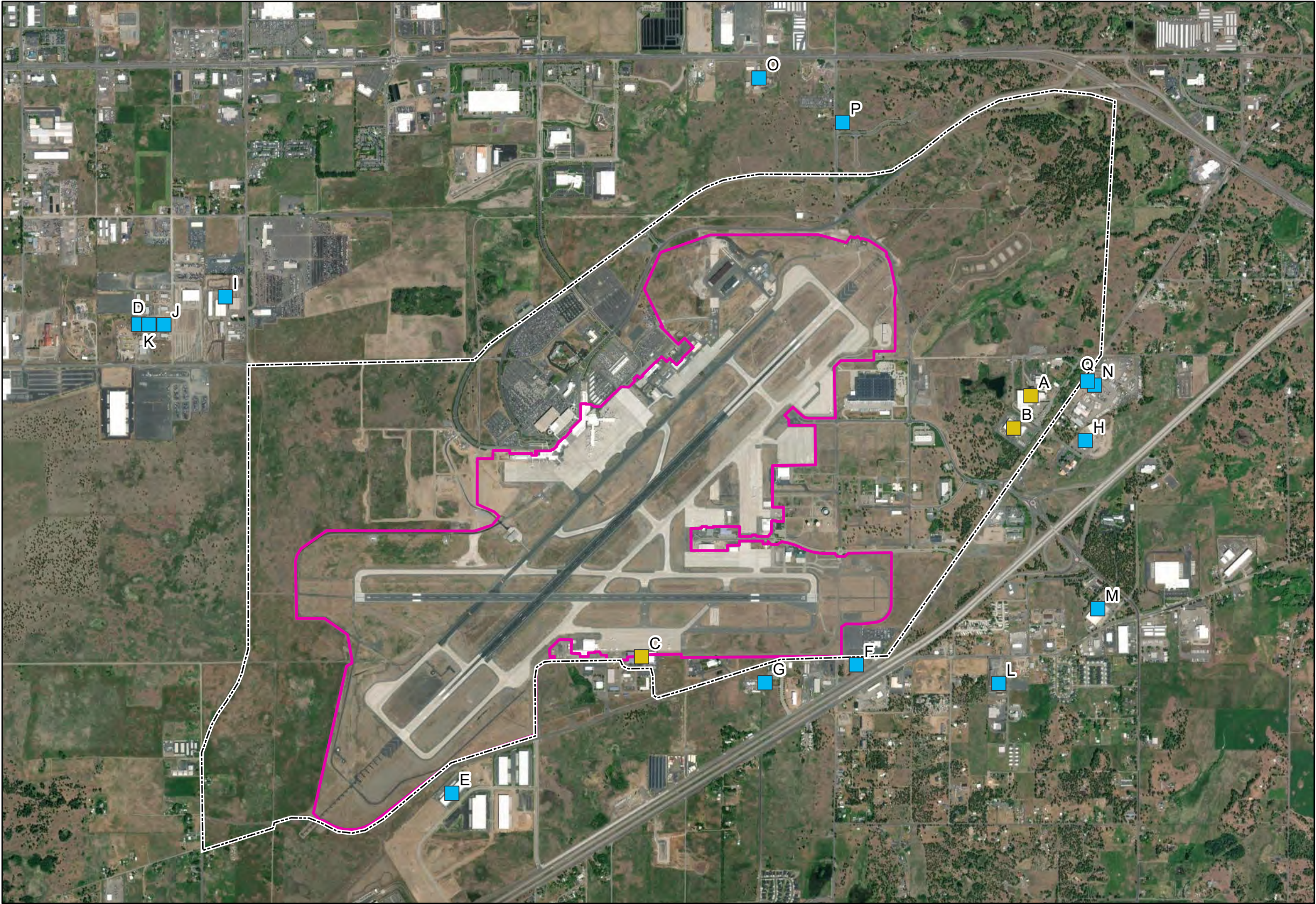
**HISTORICAL LANDFILLS  
AND SOLID WASTE FACILITIES**

Site Assessment Report  
Spokane International Airport  
Spokane, Washington

GSI Job No.	6892	Drawn By:	EKS
Issued:	13-Aug-2024	Chk'd By:	KW
Map ID:	SIAWA_HLFA	App'd By:	KW

**FIGURE 5.2**





**LEGEND**

Primary Airport Area

AOA Fenceline

Potential PFAS Source

Outside Primary Airport Area (14)

Inside Primary Airport Area (3)

LOCATION KEY

Key	Company
A	Waste to Energy
B	WM Recycling Facility
C	Industrial Coatings (IAC)
D	Extreme Industrial Coatings
E	Performance Pro Supply
F	Conoco Phillips Geigier Pipeline
G	Fisher Construction
H	Papé Machinery Construction & Forestry
I	Metals Fabrication Co.
J	Seaport Steel Building
K	Spokane Metals LLC
L	Wilson Construction
M	Silgan Unicep
N	Alloy Trailers, Inc.
O	Wear Tech
P	Spokane Fire Department Station #6
Q	Reliance Trailer Company

**Notes**

- 1.) Potential PFAS sources as identified by Interstate Technology Regulatory Council (ITRC) guide
- 2.) Company names from inventory of all properties within 1 mile by ERIS
- 3.) Aerial imagery provided by Esri ArcGIS Online, 2023.



GSI job No.	6892	Drawn By:	EKS
Issued:	13-Aug-2024	Chk'd By:	KW
Map ID:	SIAWA_PFS2	Appv'd By:	KW
FIGURE 6.1			

# Potential Third-Party PFAS Sources

Site Assessment Report  
Spokane International Airport - Spokane, Washington

Projected Coordinate System  
Datum: NAD 83  
State Plane Washington North  
Units: Feet  
Feet 0 1,000 2,000